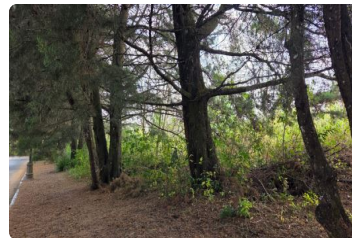


# FOR SALE

## \$ 787,860.45 USD

Guatemala - Guatemala  
Road to El Salvador  
Listing ID: 003024426021

Lot for Sale in Casa y Campo, Km 23.5 Carretera a El Salvador, Guatemala Excellent property for sale, ideal for building a family home within an exclusive gated community. Surrounded by green areas, the lot offers 12,120.93 vrs<sup>2</sup> of land. Includes one water share (paja de agua). Flat topography, ideal for spacious residential homes. The community offers the following amenities: Clubhouse Gym Swimming pool Tennis and squash courts Gardens Open social areas 24-hour security gate Wide streets Sale Price: US\$787,860.45 plus applicable taxes.



[SEE THIS PROPERTY ON THE MAP](#)



**GUISELA PINEDA**  
SALES AGENT  
502 30373395  
[gpineda@remax502.com](mailto:gpineda@remax502.com)  
[www.remax502.com](http://www.remax502.com)



RE/MAX 502

Guatemala City, Guatemala, Guatemala

Each office is independently owned and operated